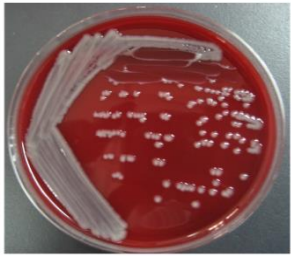
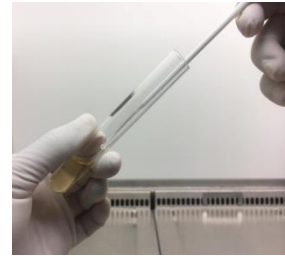


ESBL: Test procedure



35±2 °C,
18-24 h

3-5 Colonies



MHB



0.5 McFarland



Streak on MHA



Cefotaxime



Ceftazidime



Cefotaxime/
Clavulanate



Ceftazidime/
Clavulanate



35±2°C,
16-18 h

Ambient air

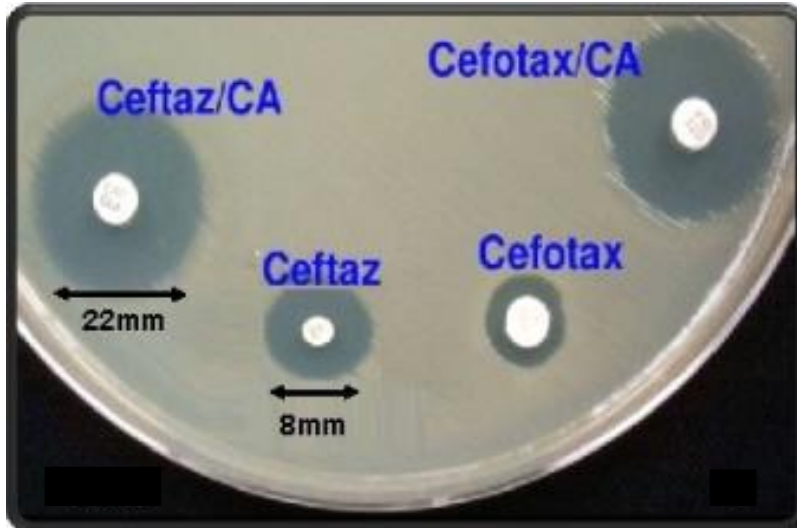


Inhibition zone

Quality control:

- *K. pneumoniae* ATCC 700603
- *E. coli* ATCC® 25922

ESBL: Test interpretation



Positive
≥5 mm increase



Negative
≤ 5 mm increase

≥5 mm increase in a zone diameter for either antimicrobial agent tested in combination with clavulanate vs the zone diameter of the agent when tested alone

QC strains:

K. pneumoniae ATCC 700603

- ≥ 5-mm increase in zone diameter of ceftazidime-clavulanate vs ceftazidime alone
- ≥ 3-mm increase in zone diameter of cefotaxime-clavulanate vs cefotaxime alone

E. coli ATCC 25922

- ≤ 2-mm increase in zone diameter for antimicrobial agent tested in combination with clavulanate vs the zone diameter when tested alone.