

mCIM: Test procedure

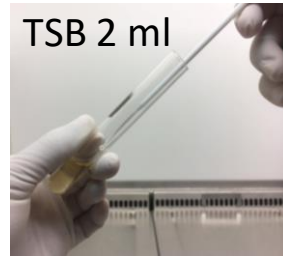
*Enterobacterales with a 1- μ L loopful of bacteria and *P. aeruginosa* 10- μ L loopful of bacteria only.



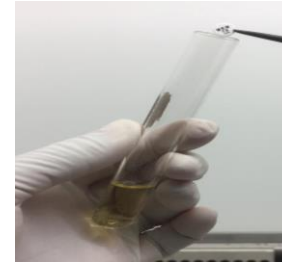
35 \pm 2 $^{\circ}$ C,
18-24 h



1 inoculated
loop* of bacteria



TSB 2 ml



35 \pm 2 $^{\circ}$ C,
4 h \pm 15 min



**Before completion of
incubation (\approx 15 min)**



E. coli ATCC 25922



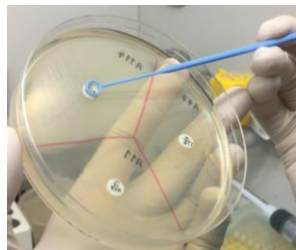
0.5 McFarland



E. coli ATCC 25922



Plate dry
3-5 min



35 \pm 2 $^{\circ}$ C,
18-24 h

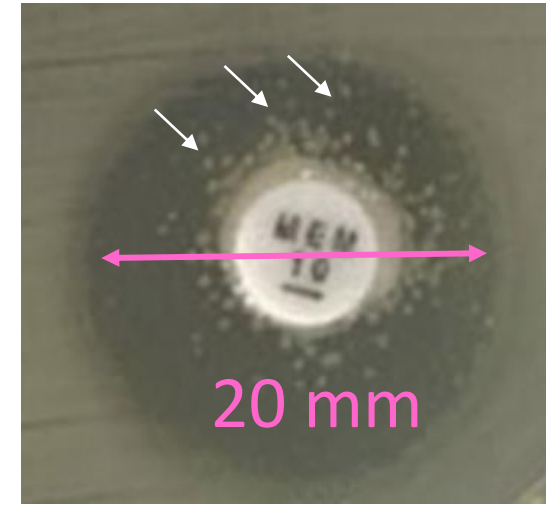
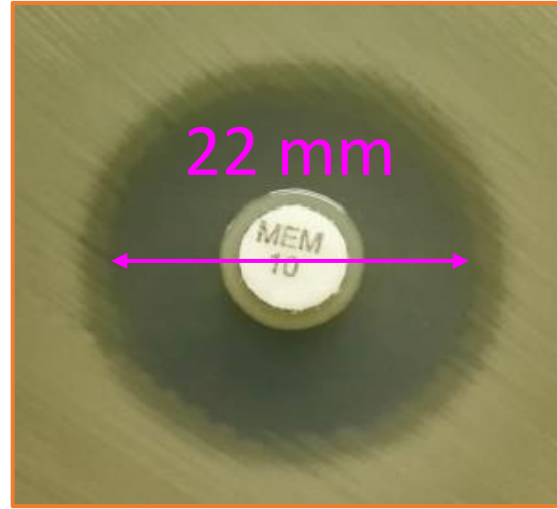
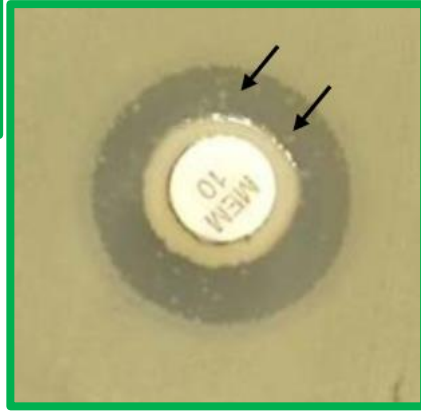


Inhibition zone

Quality control:

- *K. pneumoniae* ATCC BAA-1705 (mCIM +)
- *K. pneumoniae* ATCC BAA-1706 (mCIM -)

mCIM: Test interpretation



Carbapenemase positive

Zone diameter of 6–15 mm or presence of pinpoint colonies within a 16–18 mm zone

Carbapenemase negative

Zone diameter of ≥ 19 mm (clear zone)

Carbapenemase indeterminate

Zone diameter of 16–18 mm or Zone diameter of ≥ 19 mm and the presence of pinpoint colonies within the zone